

Lunch Sets

Mon - Fri, 12pm - 2.30pm

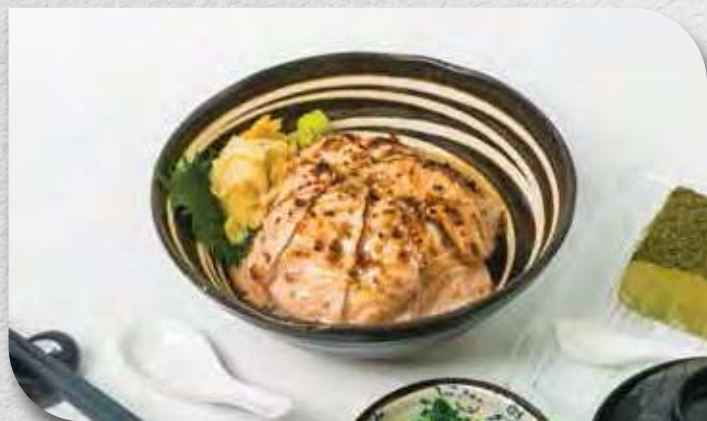
Excluding Public Holidays.



L01. CHIRASHI DON SET 23.80
With premium sashimi assortment



L02. SHAKE DON SET 20.80
Freshly cut slices of Norwegian salmon rice.



L03. SHAKE ABURI DON SET 22.80
Flame seared Norwegian salmon slices.



L04. WAGYU DON SET 26.80
Sautéed beef with onsen egg over fragrant & fluffy rice.



L05. SASHIMI UNAGI DON SET 28.80
Grilled eel slather with home-made unagi sauce over Japanese rice. Served with assorted sashimi.



L06. NEGITORO & IKURA DON SET 32.80
Freshly minced maguro, sprinkled with sesame seeds and spring onions & a generous portion of Ikura.

LUNCH

Nigiri Sushi

Jo

\$50 per pax

Nigiri Sushi 7pcs
1 Maki Roll
Miso Soup
Dessert

Tokujo

\$68 per pax

Nigiri Sushi 9pcs
1 Hand Roll
Miso Soup
Dessert

Aburi

\$50 per pax

Aburi Sushi 5pcs
1 Spicy Maki Roll
Miso Soup
Dessert

LUNCH

Omakase

mizuya 水屋

OMAKASE UME

\$88 per pax

2 Kind Appertizer
Assorted Sashimi
Clear Soup
Assorted Nigiri Sushi
Maki Roll
Miso Soup
Dessert

OMAKASE MATSU **BEST SELLER**

\$138 per pax

3 Kind Appetizer
Sashimi Carpaccio
Assorted Sashimi
Clear Soup
Assorted Nigiri Sushi
Negitoro Temaki
Miso Soup
Dessert

OMAKASE MIZU **水** **Recommendation**

\$168 per pax

3 Kind Appetizer
Sashimi Carpaccio
Assorted Sashimi
Cooked Dish
Premium Nigiri Sushi
Uni Temaki
Miso Soup
Seasonal Fruits

All prices are subjected to 10% service charge. No gst.